

# BWT PROFESSIONAL MO6500 4" REVERSE OSMOSIS SYSTEM



BWT reserves the right to amend the product's system architecture provided that its functionality and usability will not deteriorate

## PHYSICAL PARAMETERS

Influent water, concentrate, permeate	G 1/2"
Antiscalant dosing port	G 1/2"
Permeate flushing input port	G 1/2"
Approximate weight (bare system / crated system)	55 kg / 80 kg
Dimensions (bare system, W x D x H)	0.54 x 0.39 x 1.45 m
Dimensions (crate, W x D x H)	0.60 x 0.45 x 1.55 m

## BWT PROFESSIONAL MO6500 4" REVERSE OSMOSIS SYSTEM

Code	Product	Flow rate, L/h (GPH)	Membrane*	Pieces on pallet
125692215	MO6500TP5BWT RO System	200-300 (50-80)	1/40 x 40	4

\* Membranes are not included in the package

## APPLICATIONS

Steam boilers, heating and cooling circuits, breweries and beverage production, livestock and poultry farms, glazing factories, laundry and car wash etc.

## KEY FEATURES

- Controller OC5000
- Easy to use thanks to smart architecture
- Modularized architecture for adding permeate flushing or raw water blending assembly to the system
- Grundfos worldwide guaranty
- CE marked and confirmed to be safe in accordance with EC New Approach Directives

## EQUIPMENT:

- Grundfos® CM 1-10 pump
- 300 psi membrane housing
- BB20 sediment prefilter
- Electrical panel with Ecosoft controller
- Danfoss solenoid valves
- Piping, instrumentation
- Steel frame
- Carton box
- PP melt blown sediment filter, 5 micron

## OPTION:

- Filmtec™ XLE-4040 / LCLE-4040
- Dosing pump for antiscalant
- Versatile set for raw water blending (30...240 L/h) or permeate flushing

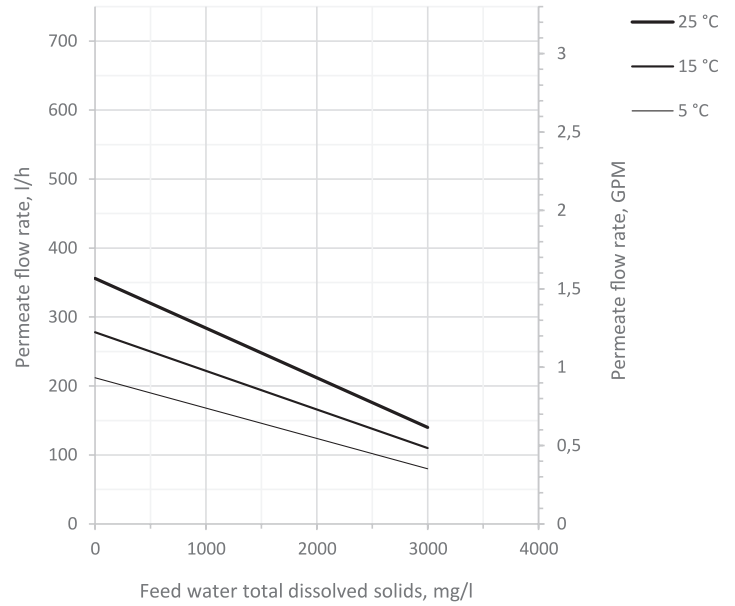
### TECHNICAL SPECIFICATION

Permeate capacity <sup>1</sup>	250 L/h
Permeate recovery <sup>2</sup>	75%
Maximum TDS	300 mg/L (10 g/L)
Influent flow demand	320...400 L/h (service) 1500...2000 L/h (rinse)
Operating pressure	8...12 bar
Maximum pressure	14 bar
Electrical requirements	230 V, 50 Hz (1 ph)
Electrical power	0.67 kW
Pre-filter rating	5 µm

<sup>1</sup> depends on feed water TDS, temperature, and permeate recovery — see graph on the right

<sup>2</sup> for low scaling/fouling water

### BWT MO6500 FLOW CAPACITY (WITH XLE-4040 MEMBRANES)

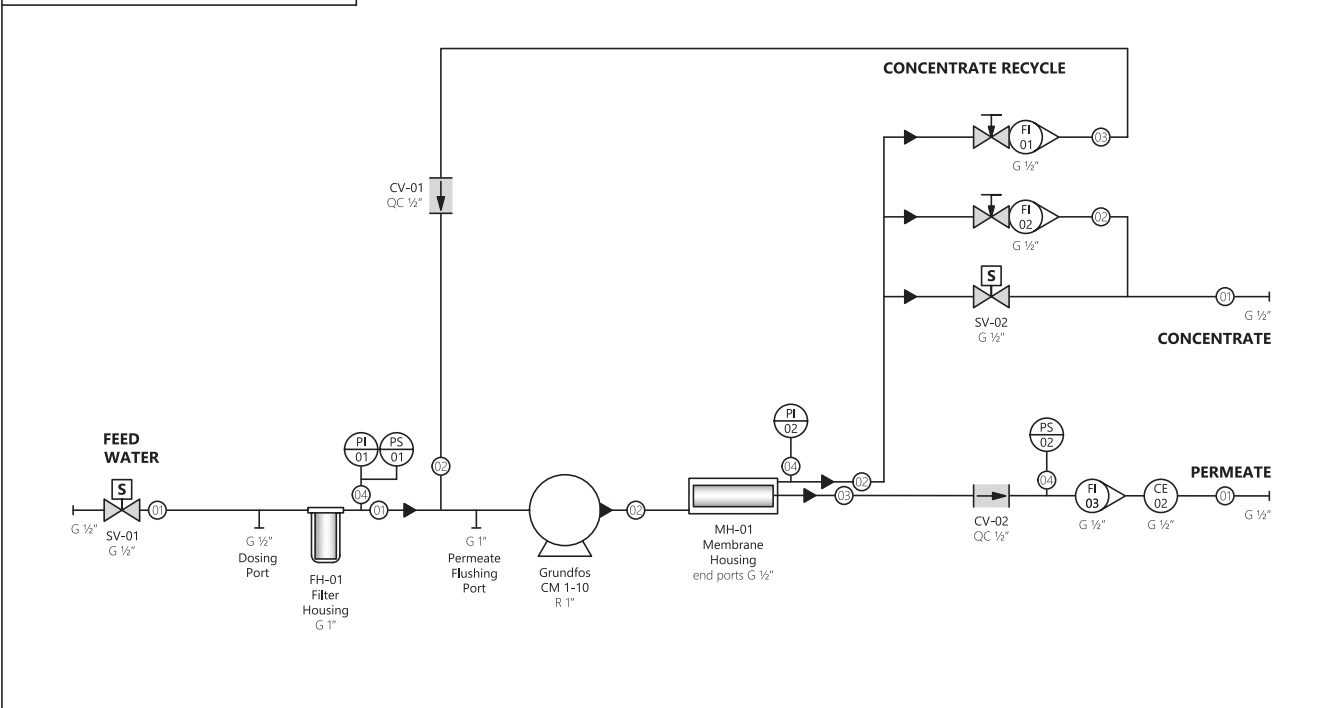


Permeate flow rates are calculated under the following conditions:

- 2 bar influent water pressure
- 0 bar backpressure in the permeate line
- fresh membranes
- XLE-4040 membranes

## PIPES AND INSTRUMENTS DIAGRAM

**MO6500TP5BWT**  
Reverse Osmosis System  
Piping and Instrumentation Diagram



PIPES AND CONNECTIONS		VALVES		INSTRUMENTS	
①	PVC pipe 20 mm O.D.	G	parallel BSPT thread	PI	Pressure gauge (panel mount)
②	PVC hose DN15, G½"	R	tapered BSPT thread	PS	Pressure switch (panel mount)
③	PE hose ½" O.D.	PVC	polyvinylchloride (solvent weld)	CE	Conductivity probe (process mount)
④	PE hose ¾" O.D.	PE	polyethylene	FI	Rotameter
⑤	PE hose 1" O.D.	QC	quick connect collet fitting		
		S	Solenoid Valve		
		T	Needle Valve		
		CV	Check Valve		